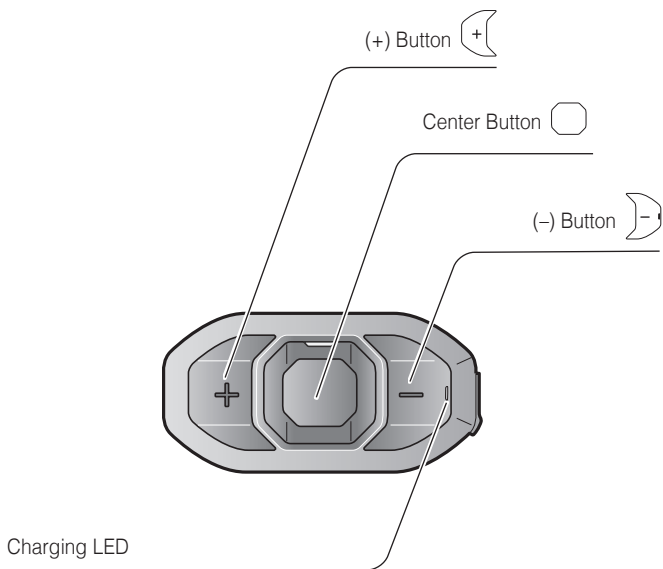
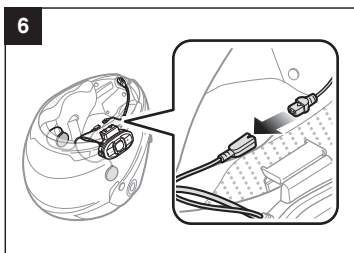
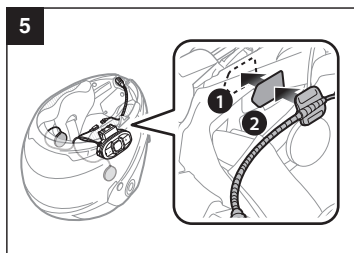
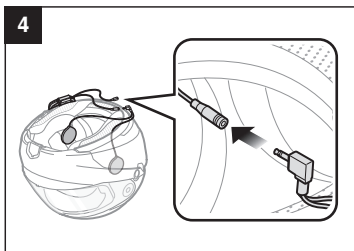
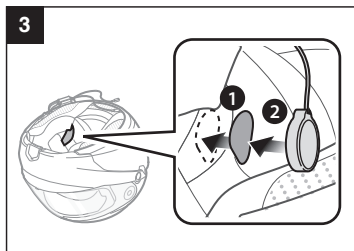
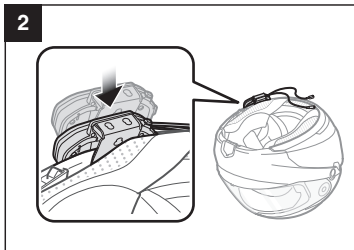
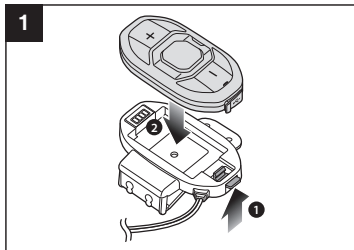


Sena SF4 Quick Start Guide

ENGLISH



Installation



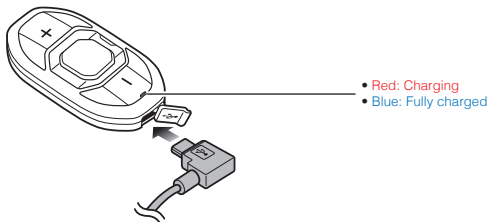
Sena Motorcycles App

- Download
 - Android: Google Play Store > **Sena Motorcycles**
 - iOS: App Store > **Sena Motorcycles**

Sena Device Manager

The **Sena Device Manager** allows you to upgrade the firmware and configure its settings directly from your PC or Apple computer. Download the **Sena Device Manager** from sena.com.

Charging



NOTICE

- This **Quick Start Guide (Version 2.0.0 or higher)** explains how to operate the SF4 with **firmware version 3.0 or higher**.
- For operating the SF4 with a **firmware version lower than 3.0**, refer to the **SF4 Quick Start Guide** that is available when you connect the SF4 to the Motorcycles App.

Button Operation



Tapping



Double Tapping

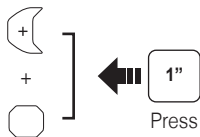


Press for 1 sec



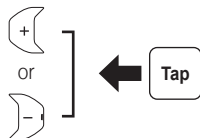
Press and Hold

Power On/Off



Press

Volume Adjustment



Tap

Battery Check



Power On



LED

70 ~ 100%



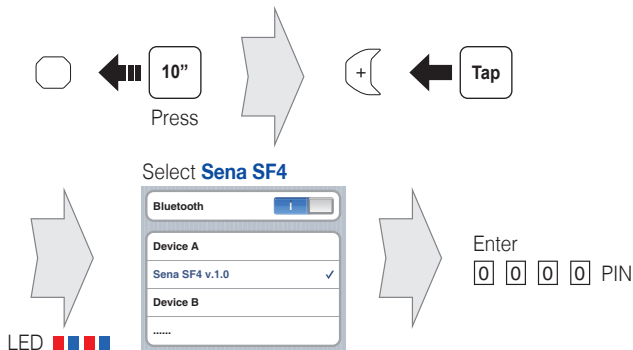
30 ~ 70%



0 ~ 30%

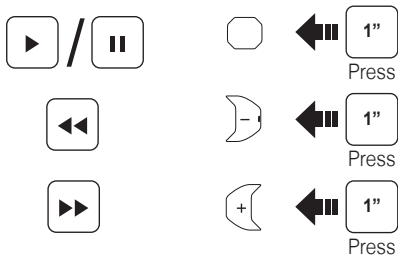


Phone, Music Pairing



- The headset will enter the Phone Pairing mode automatically when you initially turn on the headset.
- For more information on phone pairing, refer to the User's Guide.

Music Operation



Mobile Phone Call Making and Answering



Answer



Tap



End



2"

Press



Voice Dial



3"

Press



Speed Dial



3"

Press



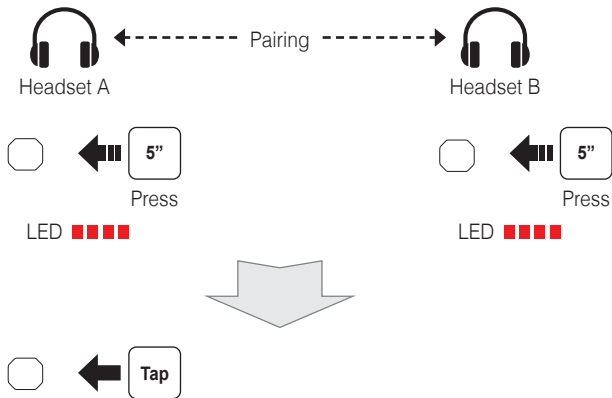
Reject



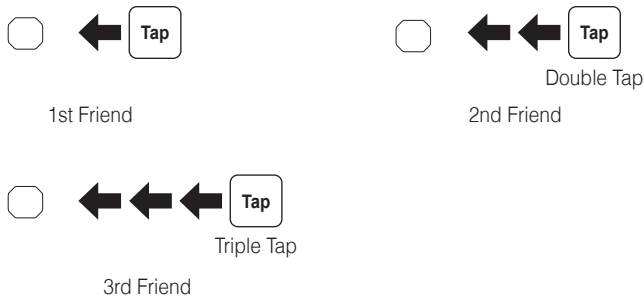
2"

Press

Intercom Pairing



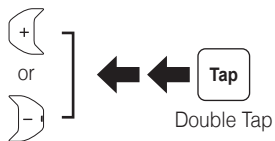
Intercom Start/End



Radio On/Off



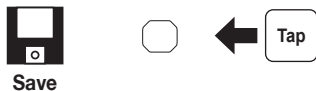
Radio Seek Stations



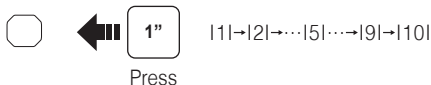
Radio Scan Up FM Band



Save to preset while scanning



Radio Move to Preset Station



Radio Save or Delete Preset



Press



1 ~ 10, Cancel



or



Save



Press

or



Delete



Press

Setting

Configuration Menu



10"

Press

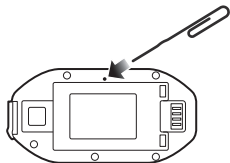
Troubleshooting

Factory Reset

If you want to restore the Sena **SF4** to factory default settings, use the Factory Reset in the configuration menu. The headset automatically restores the default settings and turns off.

Fault Reset

If the Sena **SF4** is not working properly for any reason, reset by gently pushing the pin-hole reset button on the back of the main unit.



SENA



SENA Technologies, Inc.

Customer Support : sena.com

SF Series Quick Reference

Type	Operation	Button Command	LED
Basic Function	Power on	Press the Center Button and the (+) Button for 1 second	Solid blue
	Power off	Tap the Center Button and the (+) Button	Solid red
	Volume adjustment	Tap the (+) Button or the (-) Button	-
	Microphone Mute	Press the Center Button and the (-) Button for 1 second	-
Mobile Phone	Answer mobile phone call	Tap the Center Button	-
	End mobile phone call	Press the Center Button for 2 seconds	-
	Voice dial	Press the Center Button for 3 seconds	-
	Speed dial	Press the (+) Button for 3 seconds	-
	Reject incoming call	Press the Center Button for 2 seconds	-
Intercom	Intercom pairing	Press the Center Button for 5 seconds	Red flashing
		Tap the Center Button of any one of the two headsets	
	Start/End each intercom	Tap the Center Button	-
	End all intercoms**	Press the Center Button for 3 seconds	-
	Start Group Intercom**	Tap the (+) Button and the (-) Button at the same time	Green flashing
End Group Intercom**	Press the Center Button for 3 seconds	-	
Music	Play/Pause Bluetooth music	Press the Center Button for 1 second	-
	Track forward/back	Press the (+) Button or the (-) Button for 1 second	-
FM Radio**	FM radio on/off	Press the (-) Button for 1 second	-
	Select preset	Press the Center Button for 1 second	-
	Seek stations	Double tap the (+) Button or the (-) Button	-
	Scan up FM band	Press the (+) Button for 1 second	-
	Stop scanning	Press the (+) Button for 1 second	-
	Save preset while scanning	Tap the center Button	-

** Available only in SF4